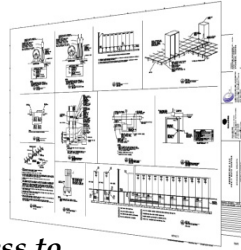




**LANE COBURN & ASSOCIATES, LLC**  
Electrical Engineering & Technology Solutions for the Construction Industry

**LCA NEWSLETTER - FEBRUARY 2012**

We would like to take this opportunity to thank all of our Great Clients! We owe our success to you! Please visit [www.lanecoburn.com](http://www.lanecoburn.com) for more information about Lane Coburn & Associates.



Lane Coburn & Associates is continuing to grow! Our Staff Includes Seasoned Electrical Engineers, RCDD's, LEED A.P.'s, LC's & Design Professionals with an average of over 25 years of experience. We are licensed in 13 states and provide Electrical Engineering and Technology Consulting nationally and internationally. Join Our Team! We are looking for a Senior Team Member, if you have the right stuff, send us your resume.

**The LCa Team**



Keith Lane, P.E., RCDD, LEED   Scott Coburn   Bill Waldrop, RCDD   Gary Mullin, P.E.   Gerald Gerhardt, P.E.   Nick Alexander, LEED AP

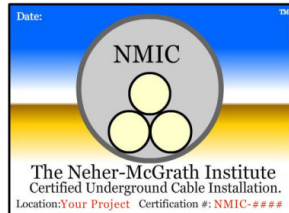


Don Pontsler, P.E., MPA   Vicky Williams   Theresa Lane   Lisa Wilcox   Jack Slagle



**MISSION CRITICAL ENVIRONMENTS**

LCA Specializes in **Mission Critical Facilities**. In addition to engineering services, LCA contributes to the engineering community with Articles, Roundtables, Presentations & Webcasts.



Keith Lane wrote an article for BISCI News in January on the topic of "LEED for the Electrical & Telecommunications Engineer". Keith Lane also authored an article for Pure Power Magazine in January on the topic of "Selecting the Appropriate UPS Technology for Your Mission Critical Project". Scott Coburn & Keith Lane were interviewed by Decagon Devices in January for an article on Neher McGrath Duct Bank Heating Calculations.

Keith Lane participated in a National Expert Roundtable on the topic of "Shopping Malls, Retail Stores and Strip Malls" in the December 2011 edition of Consulting Specifying Engineering Magazine.

LCA owns and operates the Neher-McGrath Institute. Visit [www.neher-mcgrath.org](http://www.neher-mcgrath.org) for more information.

**Neher-McGrath Institute**

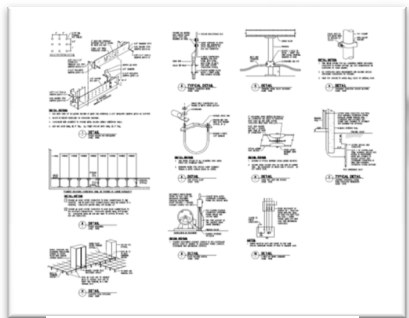
**NEW PROJECT**



*Below is a review of New Projects & New Phases of Existing Projects that Lane Coburn & Associates has started since our last Newsletter in December of 2011.*

**Large Data Center - Japan - Undisclosed Client**

Lane Coburn & Associates is working for an undisclosed client on a large data center deployment in Japan. LCA is providing the Electrical Engineering Consulting Services.



**Feasibility Study for a Large Building Complex**

Lane Coburn & Associates is working for CBRE and providing an analysis of the electrical system of two large buildings as part of a feasibility study for CBRE.



**AE IDIQ Contract -West of the Cascade IDIQ Roads and Infrastructure IDIQ**

Lane Coburn & Associates is part of the team that was awarded the AE IDIQ Contract -West of the Cascade Roads and Infrastructure IDIQ. BergerABAM is the managing this IDIQ.



**SDC M1 - 375 Pearl Project in New York - Sabey Data Center Properties**



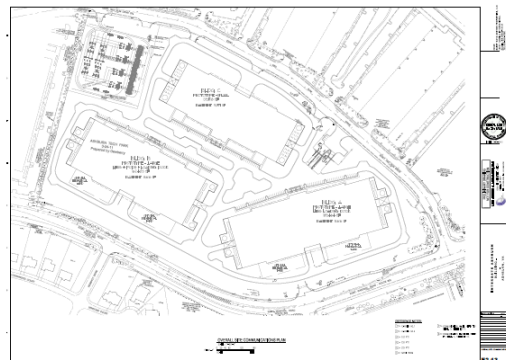
Lane Coburn & Associates is providing consulting services directly for Sabey Data Center Properties (SDCP) on this very large data center buildout in New York. We have moved to the Construction Phase. See the following link for the press release:

[http://www.sabey.com/docs/pdf/press\\_releases/SDCP\\_Acquires\\_375\\_Pearl.pdf](http://www.sabey.com/docs/pdf/press_releases/SDCP_Acquires_375_Pearl.pdf)



**Large Data Center Campus Project in Ashburn Virginia**

Lane Coburn & Associates has completed Construction Documents, working directly for Sabey Data Center Properties (SDCP), on a very large data center campus buildout in Ashburn Virginia. We are now moving to the construction phase of the project.



**Data Center Deployment National - Undisclosed Client**

LCA is currently working for Silent-Aire for an undisclosed Data Center Client on a Data Center deployment in the US.

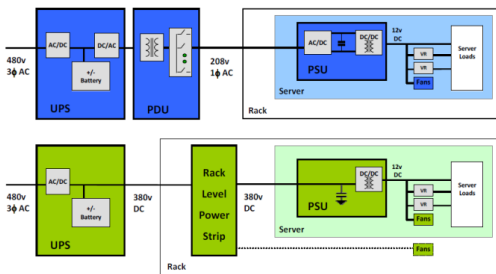


**Large Data Center - Forensics Analysis, Expert Witness**

LCA is providing additional scope for AECOM as an expert witness for a large data center in the Mid West. LCA was hired based on our national recognition as experts in the field of Neher-McGrath heating calculations and evaluation. Visit [www.Neher-Mcgrath.org](http://www.Neher-Mcgrath.org)



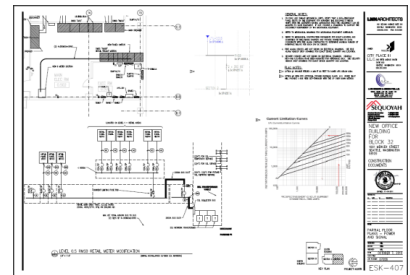
**Innovative DC Containerized Data Center Prototype - Undisclosed Client**



Lane Coburn & Associates is providing engineering services on a prototype DC Data Center design for a large enterprise client. We are now in the Construction Administration stage of this cutting edge containerized data center.

**Sniper Complex Construction Support**

Lane Coburn & Associates is working for BergerABAM on construction support for the Sniper Complex project at Joint Base Lewis-McCord.



**Davita Data Center - VECA Electric**

LCA is currently working for VECA Electric on a new stage of the Davita Data Center Design.



**National Electrical Code & Energy Code Analysis & Feasibility Study for New Project in Seattle**



Lane Coburn & Associates is providing engineering services for a large project in Seattle. Our scope of work includes the following; National Electrical Code & Energy Code Analysis and a Feasibility Study.

**Data Center Deployment National - Undisclosed Client**



LCA is currently working for Silent-Aire for an undisclosed Data Center Client on a Data Center deployment abroad.



LCA was named one of the Consulting Specifying Engineering Magazine's GIANTS, top 100 Engineering Firms in the U.S. based on revenue. We believe it is better to be good than big, but we are proud of our top 100 MEP Status this year. We owe it all to our clients. We will continue to grow to support our client's needs.

90	The Rock Brook Consulting Group	Private	4,430,000	4,430,000
91	PWI Engineering	Employee-owned	4,625,855	4,162,370
92	Korda/Nemeth Engineering Inc.	Private	9,200,000	4,156,000
93	SSC Engineering Inc.	Private	4,013,000	4,013,000
94	Lane Coburn & Assocs. LLC	Private	3,721,000	3,721,000
95	Kamm Consulting Inc.	Private	3,629,946	3,521,048
96	McGuire Engineers Inc.	Private	3,154,000	3,154,000
97	JVP Engineers P.C.	Private	3,250,000	2,800,000
98	Innovative Engineering Inc.	Private	7,000,000	1,500,000
99	reliatech LLC	Private	3,500,000	1,500,000

See LCA's Firm Video at the Link Below for a summary of our Firms experience, expertise, services, inovation and clientelle. For more informaiton please visit our website at: <http://www.lanecoburn.com/>



LCA has successfully completed numerous projects as the Electrical or Telecommunications Expert Witness providing Testimony and Forensics Analysis. For more informaiton please visit our website at:

<http://www.electricexpertwitness.com>



**Keith Lane**  
P.E., RCDD, NTS, RTPM, LG, LEED AP BD+C

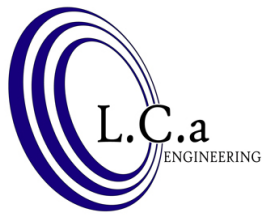
**Scott Coburn**  
IBEW Journeyman Electrician, IAAI, WSSHE

**Bill Waldrop**  
RCDD

**Don Pontsler**  
P.E., MPA

**Nick Alexander**  
LEED AP BD+C

**ELECTRIC EXPERT WITNESS**



### To Better Serve Our Clients

LCA is a registered Small Business with the Federal Government. The following is our registration information:

Certifications: SBE  
ORCA Registration

DUNS # 926179537  
NAICS: 541330 & 541340

CCR Registration  
CAGE CODE: 555F1



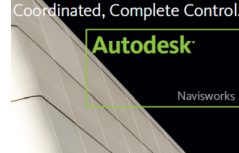
We have expanded our professional engineering state licenses to 13. Our state licenses include; Washington, Oregon, California, Idaho, Arizona, Montana, Nevada, Utah, Hawaii, Virginia, Pennsylvania, New York & Alaska. We are also a National Certificate Holder of an NCEES record that allows us to obtain other state licenses in an expedited manner.

### CAD/BIM/3D/BENTLEY

LCA is proficient in a Full Line of CAD, BIM, 3D & Collision Detection Software.

This includes; Autodesk MEP, Revit, Navisworks & Bentley Microstation.

Bring your building systems to life.



### THANKS TO OUR GREAT CLIENTS



ADD2NET  
 AECOM  
 AHCS  
 Archer Western Contractors  
 Allied Electric  
 AlfaTech  
 AMAZON  
 AVDATA Inc  
 Berger/ABAM  
 Bovis Lend Lease  
 Benaroya Properties  
 Blue Oak Energy  
 Callison Architects  
 Chatham LLC  
 Coleman Hull & van Vliet

Cohen & Richardson  
 CB Richard Ellis  
 CH2MHILL  
 City of Bellevue  
 Coinstar  
 Colocenters  
 CPSI  
 Dynalectric/Emcore  
 EHS Electric  
 ELCON  
 Greenfield LLC  
 The Harris Group  
 IDC Architects  
 Freeman-Fong Architects  
 Ellerbe Becket

HELIX Design Group  
 EPI Engineering  
 JTM Construction  
 Lighthouse Electric Group  
 LST Consulting Engineers  
 McKinstry  
 Microsoft  
 Northcom  
 Prime Electric  
 Red Sea Group  
 Rock Electric, Inc.  
 Sabey Corporation  
 Sabey Data Center Properties  
 Salish Construction  
 Jabez Construction

DaVita  
 Meagher & Geer, PLLP  
 SASCO  
 Sequoyah Electric  
 Sigma-Six Inc.  
 Silent-Air  
 Turner Construction  
 TMOBILE  
 Wave BroadBand  
 W.E. Bowers  
 West Seattle Montessori  
 williams + tam  
 VECA Electric  
 Savvis



LANE COBURN & ASSOCIATES, LLC.

www.lanecoburn.com 425-368-4848

Lane Coburn & Associates, LLC - Headquarters  
12900 NE 180th St., Suite #201, Bothell, WA 98011



ELECTRICAL ENGINEERING TELECOM/RCDD D/B TEAM MEMBER EXPERT WITNESS CONSULTING LEED AP BD+C

Bothell, WA Phone #425-368-4247 Manhattan, NY Phone #646-580-5221 Los Angeles, CA Phone #213-375-5221 Page 5