

LANE COBURN & ASSOCIATES, LLC
 Electrical Engineering & Technology Solutions for the Construction Industry

JULY 2017 - NEWSLETTER

We would like to take this opportunity to thank all of our Great Clients! We owe our success to you! Please visit www.lanecoburn.com for more information about Lane Coburn & Associates.

Lane Coburn & Associates is licensed in 17 states and provides Electrical Engineering, Technology Consulting (RCDD), Expert Witness Services & Commissioning Support nationally and internationally.

Lane Coburn & Associates, LLC. - 10 Year Anniversary

Lane Coburn & Associates is happy to celebrate one decade in business! We appreciate the dedication of our great employees and our excellent clients for the great journey over the past 10 years. With a sense of gratitude, we look forward to the next decade.

MISSION CRITICAL ENVIRONMENTS



LCA Specializes in **Mission Critical Facilities.**

In addition to engineering services, LCA contributes to the engineering community with Articles, Roundtables, Presentations & Webcasts.



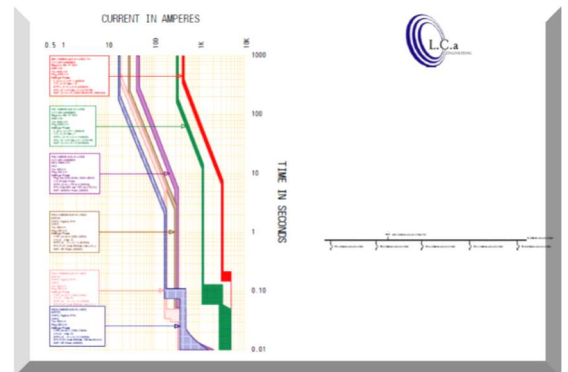
Keith Lane was part of an MEP Roundtable as an Expert on ANALYZING DATA CENTERS for Consulting Specifying Engineering Magazine.

Keith Lane was also appointed a Member of the Technical Advisory Board for Mission Critical Magazine.



ELECTRICAL ENGINEERING STUDIES

LCA Provides Power studies including short circuit, arc flash and coordination studies for very large enterprise clients as well as smaller node studies. LCA is also a leader in Neher-McGrath calculations and can help provide the lowest cost and most efficient underground installation



For more information about LCA's specialty engineering services, please refer to the following websites:

www.electricexpertwitness.com, www.neher-mcgrath.com & www.neher-mcgrath.org

NEW PROJECT



Below is a review of some of the New Projects & New Phases of Existing Projects that Lane Coburn & Associates has started in 2017

C05 - Power Studies

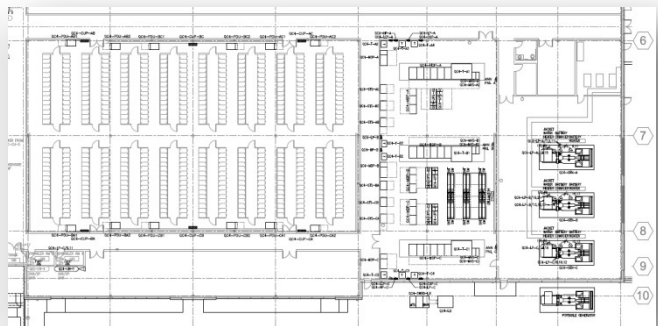
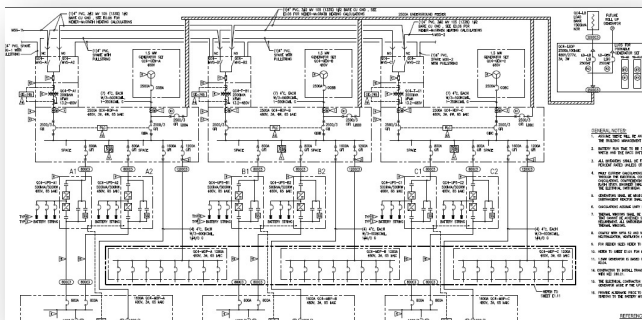
Lane Coburn & Associates providing Neher McGrath Heating calculations for the Stetner Electric for a large data center in Eastern Washington.



Sabey Quincy Data Center Building A - Phase 2 Tenant



Lane Coburn & Associates is working for Sabey Data Center Construction for Building A, Phase 2 for a confidential client.



Expert Witness for Snohomish County PUD

Lane Coburn & Associates is working as an Expert Witness for Kelly, Goldfarb, Huck & Riojas, pllc.



SABEY - Building B - GCPUD Coordination

Lane Coburn & Associates is working for Sabey in Quincy Wa., providing coordination and the Engineering Studies (selective coordination and Arc Flash) for the Medium Voltage feeder re configuration

Port Of Seattle (POS) Elevator Modernization

Lane Coburn & Associates is providing electrical engineering design for the Port of Seattle Elevator Modernization project. LCA is working for BergerABAM.



AFC Market

Lane Coburn & Associates is providing consulting Electrical Engineering Services for the Asian Food Market in Bellevue WA. LCA is working for Stan Systems.



MWH02 - CA - Engineering Studies

Lane Coburn & Associates is working with PAGE to complete the Engineering Studies (Selective Coordination, Fault Current and Arc Flash) for a Large Data Center.



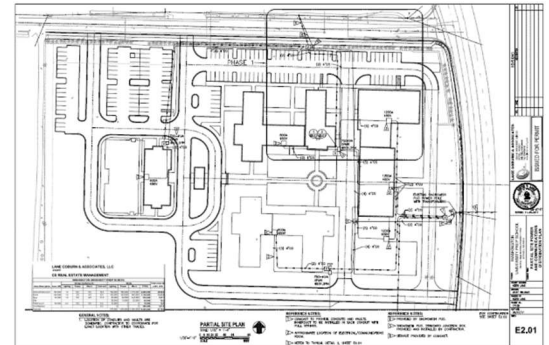
Modular Data Center - Undisclosed Client/Undisclosed Location

Lane Coburn & Associates is working on a large modular data center deployment - Undisclosed Client/Undisclosed location.



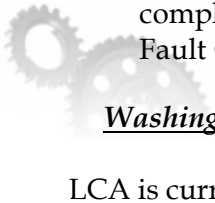
DSM05 - CA - Engineering Studies

Lane Coburn & Associates is working with KW Engineers to complete the Engineering Studies (Selective Coordination, Fault Current and Arc Flash) for a Large Data Center.



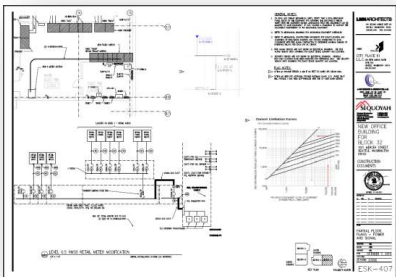
Washington University Preparatory School

LCA is currently working for CS Real Estate Management on a Large School Campus in Bothell WA.



Mission Critical Project - Undisclosed Client, Undisclosed Location

LCA is currently working for a Data Center Client providing Engineering and Planning/Design Services for a large data center.



Lemoore QC Services Airfield Lighting

Lane Coburn & Associates provided a Quality Control Review for an Air Field Lighting project for BergerABAM

3rd Culture Coffee

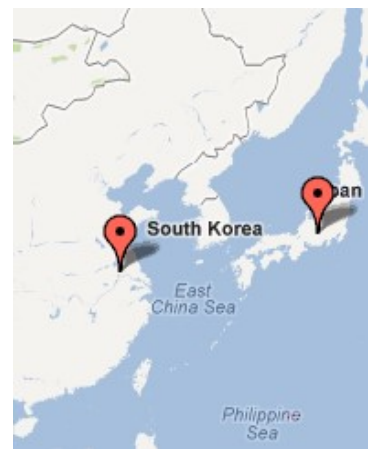
Lane Coburn & Associates is working for Brakebill Construction for a Coffee Shop Tenant Improvement.

SAT 9 & 10

Lane Coburn & Associates is working with Syska Hennessey to complete the Engineering Studies (Selective Coordination, Fault Current and Arc Flash) for a Large Data Center.



See LCA's Firm Video at the Link Below for a summary of our Firms experience, expertise, services, inovation and clientelle. For more informaiton, please visit our website at: <http://www.lanecoburn.com/>



LCA has successfully completed numerous projects as an Electrical or Telecommunications Expert Witness

<http://www.electricexpertwitness.com>

 <p>ELECTRIC EXPERT WITNESS</p>	<p>Keith Lane P. E., RCDD, NTS, RTPM, LC, LEED AP BD+C</p>	<p>Scott Coburn IBEW Journeyman Electrician, IAAI, WSSHE</p>
	<p>Bill Waldrop RCDD</p>	
	<p>Don Pontsler P. E., MPA</p>	
	<p>Nick Alexander LEED AP BD+C</p>	





LANE COBURN & ASSOCIATES, LLC - JULY 2017 - NEWSLETTER

LCA is a registered Small Business with the Federal Government. The following is our registration information:

Certifications: SBE
ORCA Registration

DUNS # 926179537
NAICS: 541330 & 541340

CCR Registration
CAGE CODE: 555F1



We have expanded our professional engineering state licenses to 17. Our state licenses include; Washington, Oregon, California, Idaho, Arizona, Montana, Nevada, Utah, Hawaii, Virginia, Pennsylvania, Minnesota, New York & Alaska. We are also a National Certificate Holder of an NCEES record that allows us to obtain other state licenses in an expedited manner.

CAD/BIM/3D/BENTLEY

LCA is proficient in a Full Line of CAD, BIM, 3D & Collision Detection Software. This includes; Autodesk MEP, REVIT, Navisworks & Bentley Microstation.

Bring your building systems to life.



THANKS TO OUR GREAT CLIENTS

ADD2NET
AECOM
AHCS
Briggs Electric
Archer Western Contractors
Allied Electric
AlfaTech
AMAZON
AVDATA Inc
BergerABAM
Bovis Lend Lease
Benaroya Properties
Blue Oak Energy
Callison Architects
Cochran Electric
Chatham LLC
Coleman Hull & van Vliet
DaVita
Latham & Watkins LLP
BOORNAZIAN, JENSEN & GARTHE
Brown Lewis Janhunen & Spencer
Apollo Intellectual Properties

COSTCO
Holmes Electric
Cohen & Richardson
CB Richard Ellis
CH2MHILL
City of Bellevue
Coinstar
Colocenters
CPSI
Dynalectric/Emcore
EHS Electric
ELCON
Greenfield LLC
The Harris Group
IDC Architects
Freeman-Fong Architects
Ellerbe Becket
Verizon
K&L Gates PLLP
Metrix Engineers
Seahurst Electric
Legacy Telecommunications

Lee Law Firm
Green & Hall LLP.
HELIX Design Group
EPI Engineering
JTM Construction
Lighthouse Electric Group
LST Consulting Engineers
McKinstry
Microsoft
Northcom
Prime Electric
Red Sea Group
Rock Electric, Inc.
Sabey Corporation
Sabey Data Center Properties
Salish Construction
Jabez Construction
McGuire Woods LLP
Stihl
Sabey Construction Inc.
URS
The Engineering Partners, Inc

North American Capital
Travelers Insurance
Lee Technologies
Meagher & Geer, PLLP
SASCO
Sequoyah Electric
Sigma-Six Inc.
Silent-Aire
Turner Construction
TMOBILE
Wave BroadBand
W.E. Bowers
West Seattle Montessori
williams + tam
VECA Electric
Savvis
ST Fabrication
SERTRES DEL NORTE
Terremark
Verizon
zColo
Zayo

Lane Coburn & Associates, LLC - Headquarters at 12900 NE 180th St., Suite #201, Bothell, WA 98011



ELECTRICAL ENGINEERING TELECOM/RCDD D/B TEAM MEMBER EXPERT WITNESS CONSULTING LEED AP BD+C